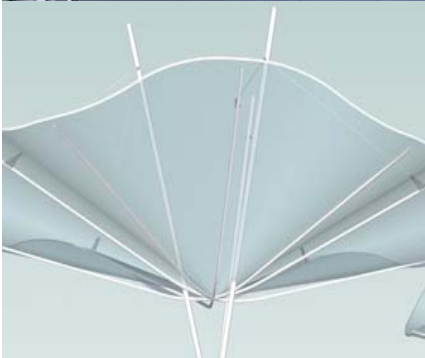
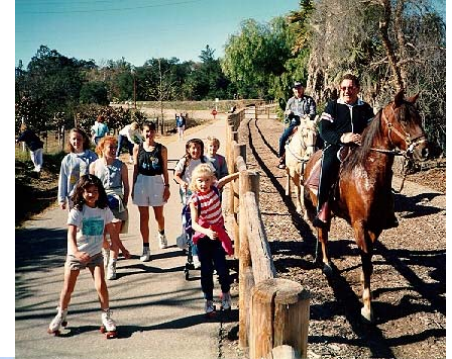
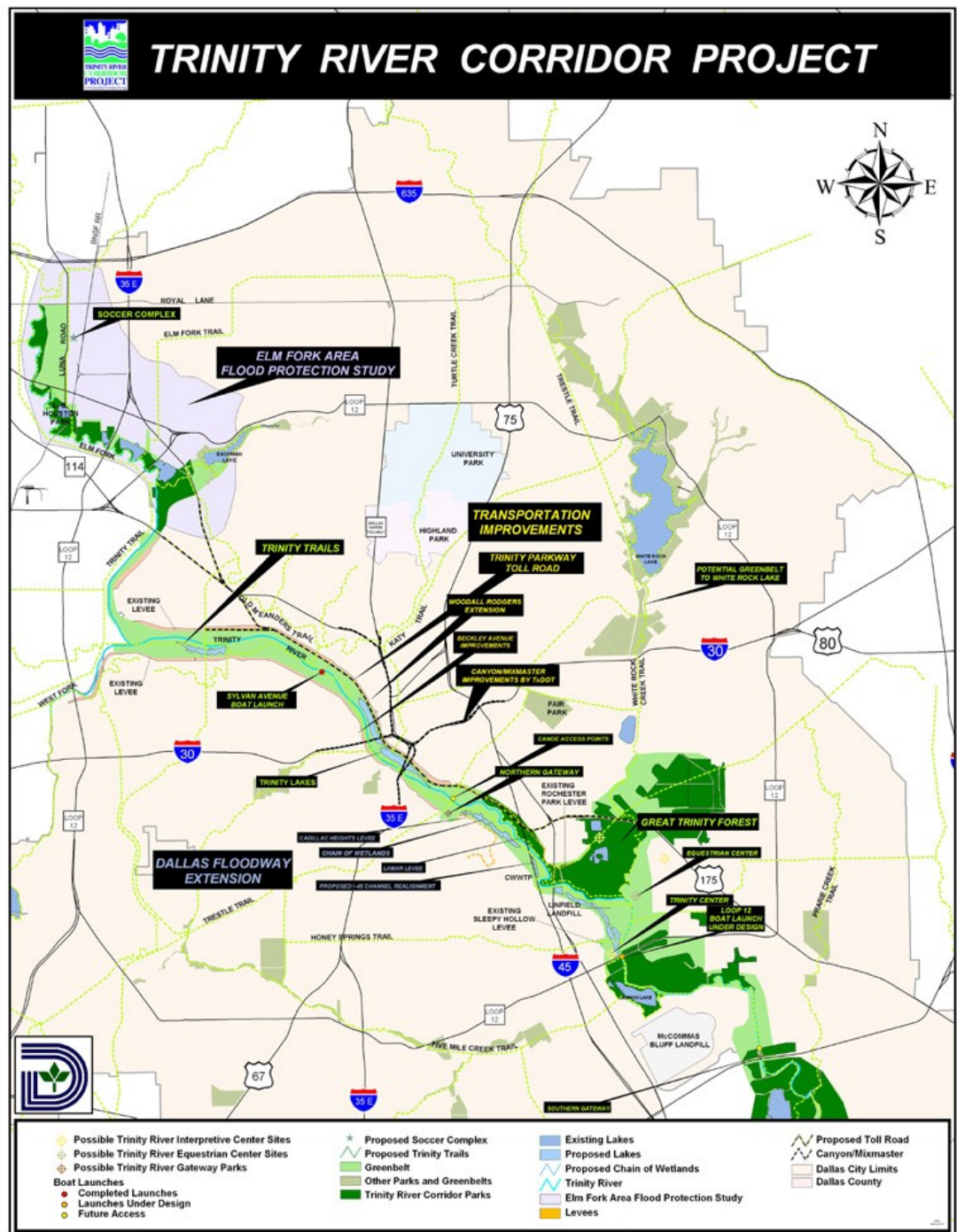




THE TRINITY
DALLAS



The project covers 20 miles of the Trinity River, approx. 10,000 acres



This project addresses a number of regional concerns, though **flood protection** remains the **essential cornerstone** of this multi-faceted effort. The inter-related components of the project are:

- Flood Protection
- Environmental Restoration
- Recreation
- Transportation
- Community/economic development

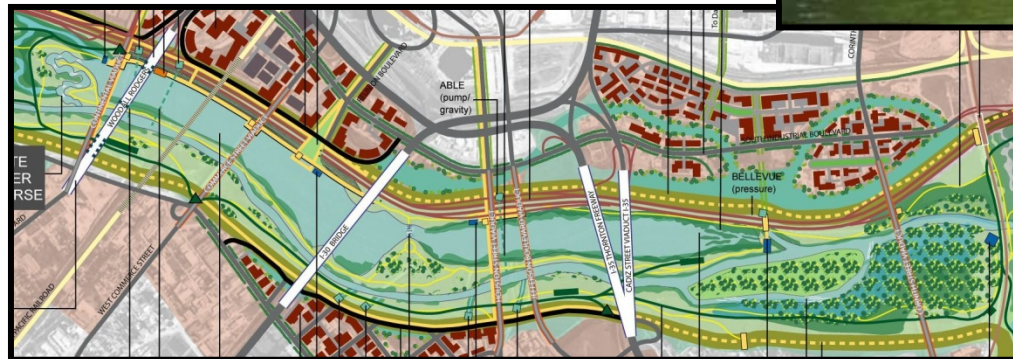


Flood Protection



Flood Protection Components

Dallas Floodway Extension (DFE) levees and wetlands for flood conveyance



Elm Fork Flood Improvements; berms and wetlands for flood conveyance

 **Dallas Floodway levee raise and flood conveyance (lakes)**



Flood Protection - Construction

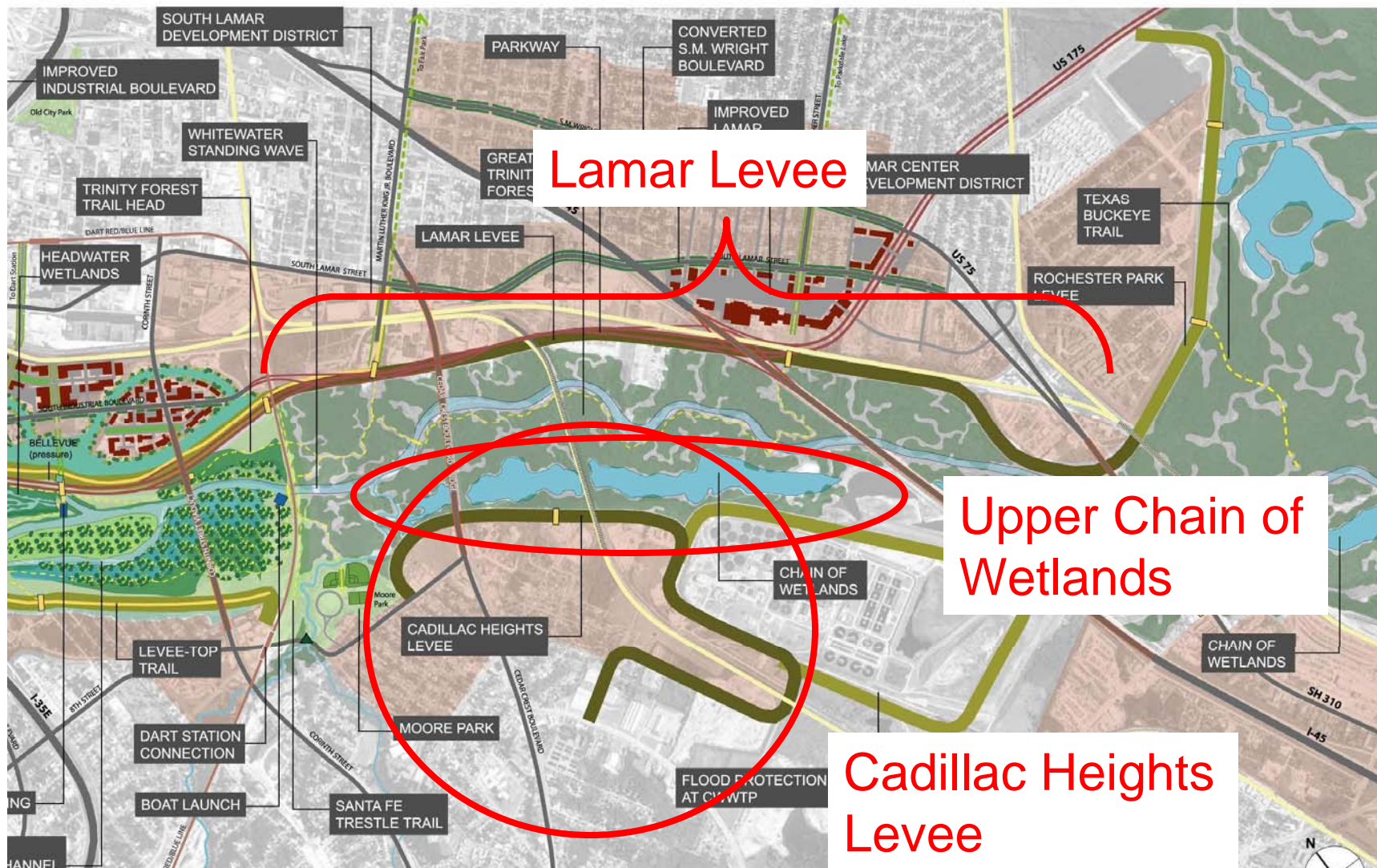


Lower Chain of Wetlands

Cells D, E, F & G are complete, and doing their job!



Future Work: DFE Levels & Wetlands



- Upper Chain of Wetlands construction starts 2011
- All work complete in 2014



Flood Protection: Dallas Floodway

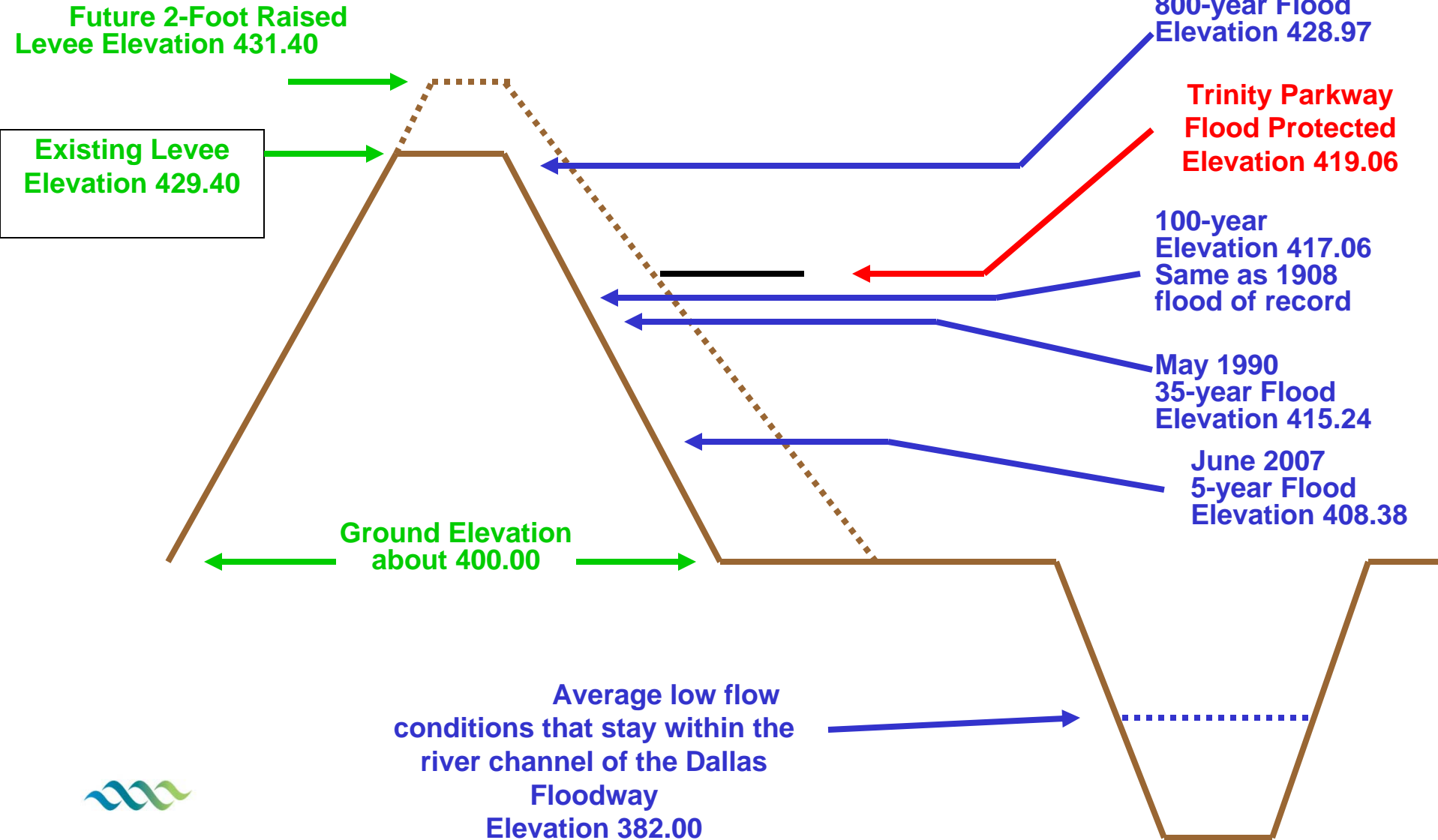


- Existing levees will be raised by as much as 2 ft.
- Will provide 800 year flood protection from Trinity River flooding
- Corps is currently working on Environmental Impact Statement
- Construction can begin in 2014



Levee Section at Commerce

Water Surface Elevations vs Parkway



USACE Periodic Inspection Report #9

- Periodic Inspections are done every 5 years by USACE (in addition to annual inspections)
- Visual inspection only; no subsurface investigation
- Previous inspections rated our levee system as Excellent to Very Good
- New rating system established by USACE in June 2007
- Rating in Periodic Inspection Report #9 for our levee system was “unacceptable”



Levee Issues from Periodic Inspection #9

- Encroachments
 - Dallas County Jail
 - Oncor Transmission Towers
- Penetrations
 - Bridge Piers
 - Pipes
- Desiccation Cracking
- Erosion
- Vegetation
 - Trees on/near the levees
 - Johnson grass
- Levees not high enough to contain the Standard Project Flood (800 year flood event) or pass the 100 year flood event



Resolution of Levee Issues – Next Steps

- More frequent mowing cycles
- Rip rap/drainage relocation for erosion
- Work with other agencies (DART, TxDOT) to fix problems with erosion & encroachment
- 193 of the 198 O&M related items repaired
- Goal is to begin 100 year levee remediation in August 2011 and be complete by December 2011
 - FEMA is revising how they remap areas as if no levees exist
 - Expectation is that no new flood insurance requirements will be mandated
- The Trinity River Corridor Project will provide many of the “fixes” for the unacceptable conditions of the levee system
 - Cutoff walls
 - Chain of wetlands
 - Removal of ATSF Railroad Bridge
 - Raising/fattening the levees



Flood Protection: Interior Drainage

- Flooding in March 2006 from Interior Drainage

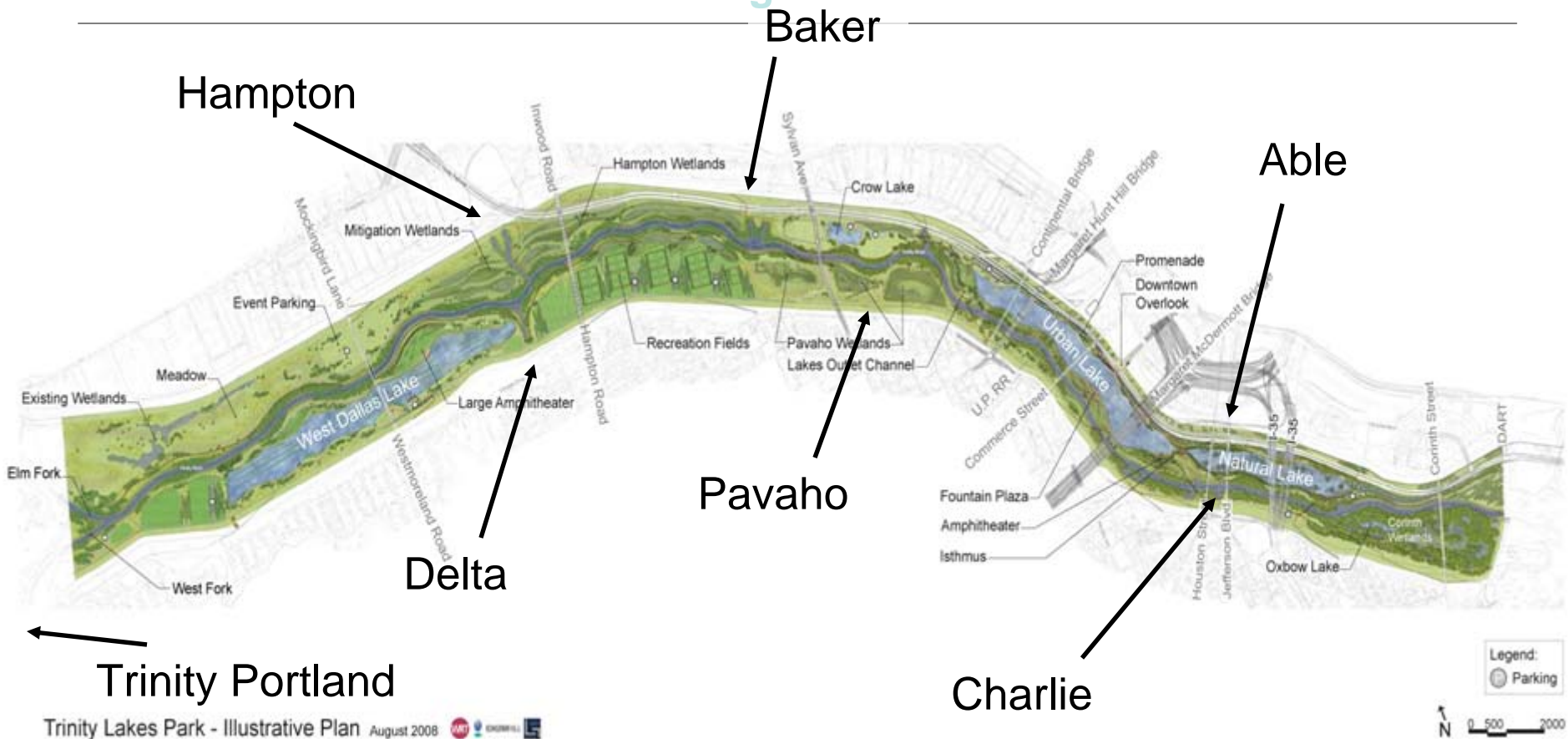


Near Pavaho Sump area at Sylvan Ave.



North of Bernal St. in West Dallas

Flood Protection: Interior Drainage



- Pavaho Sumps and Pump Station construction contract awarded in Summer 2010; to be complete in 2012
- Baker Sumps and Pump Station construction contract to be awarded in Summer 2011
- Design contracts for Able, Charlie, Delta, Trinity Portland, and Hampton pump stations are ongoing



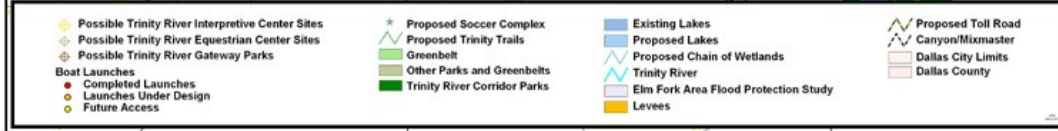
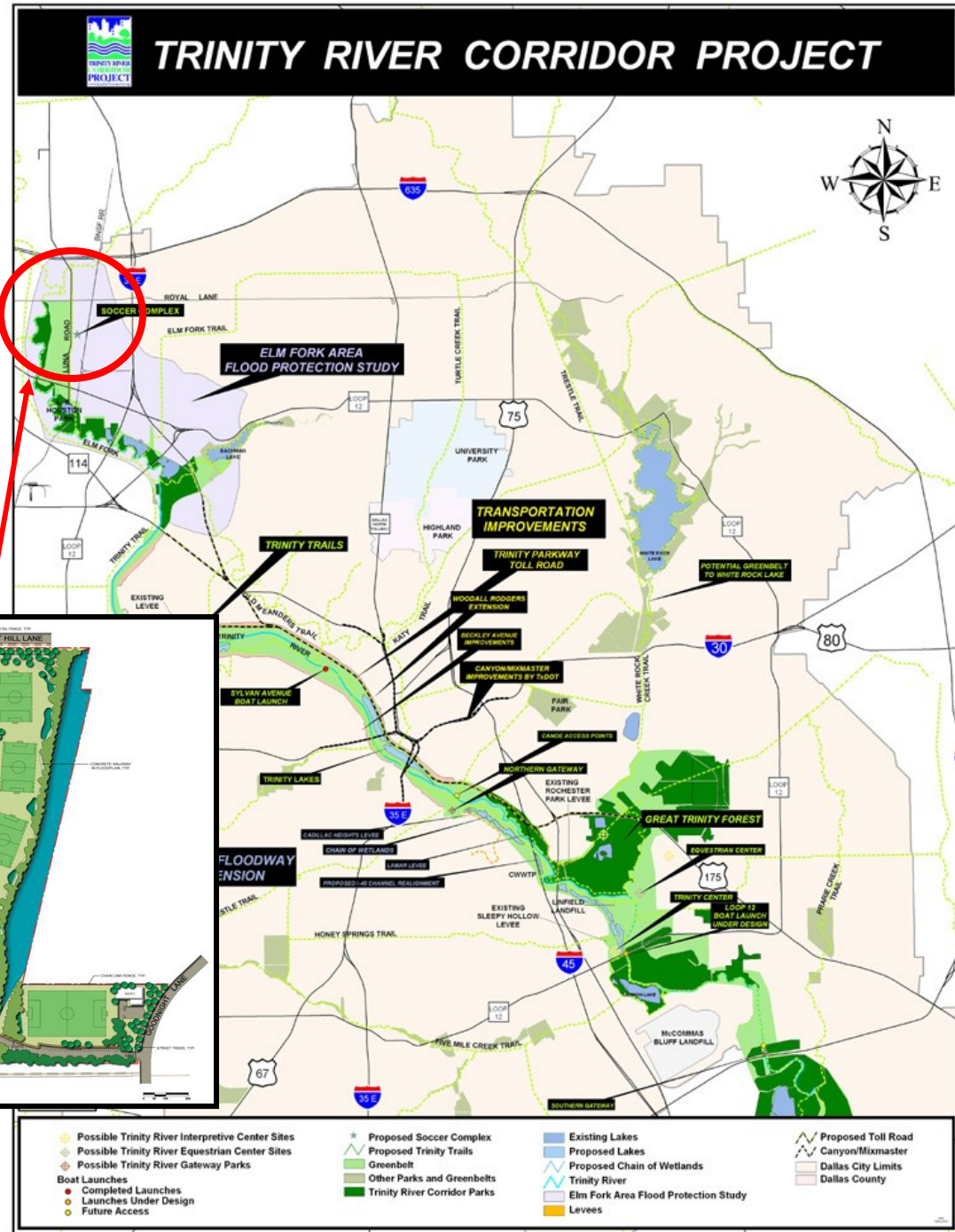


Recreation



Recreation: Elm Fork Athletic Complex & Trails

- Located west of IH-35E on Walnut Hill Lane
- Construction starts in 2011; complete in 2012



Recreation: Trinity Lakes Park



- Corps is conducting an Environmental Impact Statement (EIS) for this area; expected to be complete in 2014
- Construction can commence when the EIS is complete

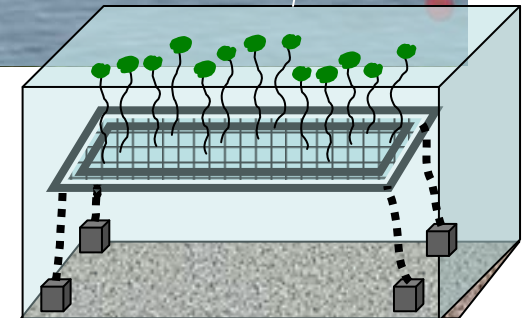




Recreation: West Dallas Lake Rowing



- The West Dallas lake is over 129 acres and over 2000 meters long (meets Olympic standards) that will provide both recreational and competitive boating opportunities for the city and region.
- Submerged wetland island to provide a rooting structure for water lilies.



Recreation: West Dallas Lake Amphitheater



- West Dallas Lake Amphitheater used for rowing competition viewing.





Recreation: View from West Dallas





Recreation: Urban Lake & Central Island



- Shade structures take the place of tree vegetation in this plaza preserving views of the downtown skyline and promenade, while Seating walls are integrated with the topography and provide illumination at night.
- Interactive fountains and dark-colored, exposed aggregate concrete paving slopes into the lake as a beach.



Recreation: Trinity Overlook



- Located on the west levee at Beckley and Commerce
- Provides an observation area to watch the construction of the Trinity Project





Recreation: Trinity Forest



Recreation: Trinity River Audubon Center



Trinity River Audubon Center





Trinity River Audubon Center



Note the many trails and wetlands surrounding the Audubon Center!



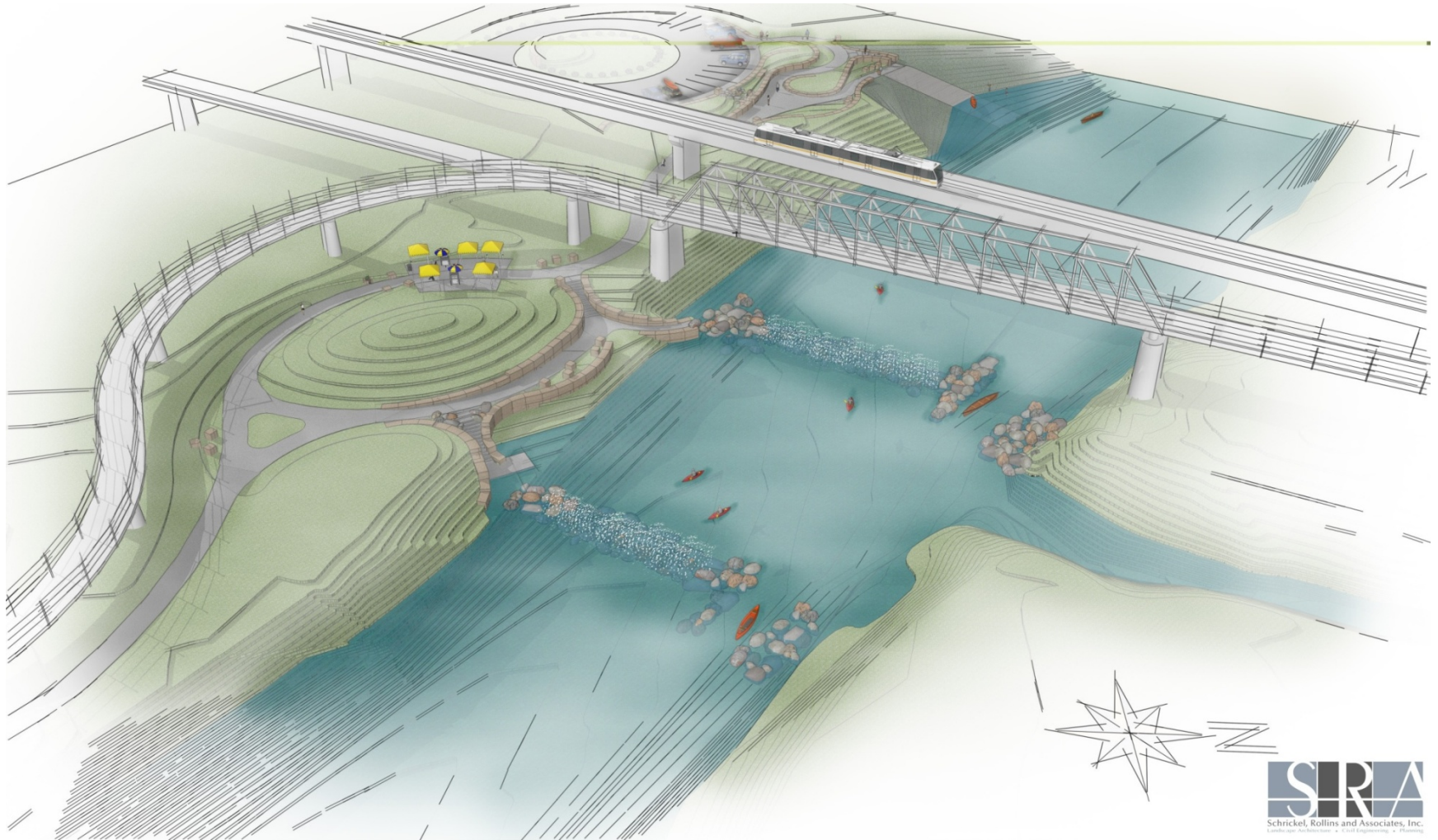
Recreation: Standing Wave & Santa Fe Trestle Trail



Standing Wave Whitewater Course



Recreation: Dallas Wave & Santa Fe Trestle Trail



- Dallas Wave complete in Spring 2011
- Santa Fe Trestle Trail complete in Fall 2011



Recreation: Standing Wave & Santa Fe Trestle Trail



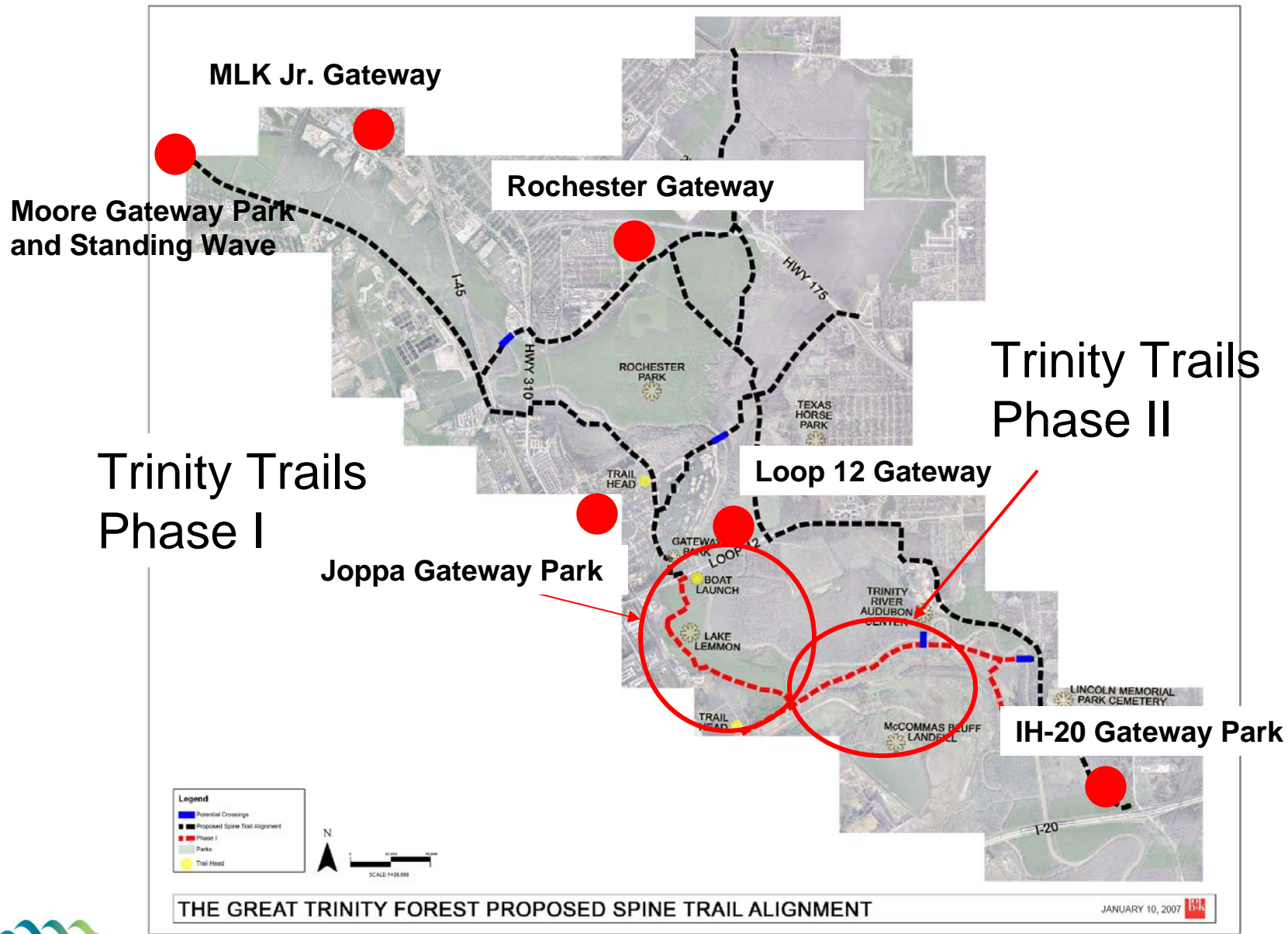
Watch videos of these kayakers on YouTube!



Recreation: Existing Trails in Rochester Park



Recreation: Future Trails Network



Transportation: Trinity Parkway Toll Road



Transportation: Trinity Parkway Toll Road



- Environmental Impact Statement underway by NTTA, To be completed in 2012
- Construction cannot begin until Corps' EIS is complete in



Transportation: Trinity Parkway Toll Road



Looking South from Hampton Rd.



Transportation: S.M. Wright Parkway





Ideal Neighborhood

Rochester Park

SM Wright Freeway

Lamar

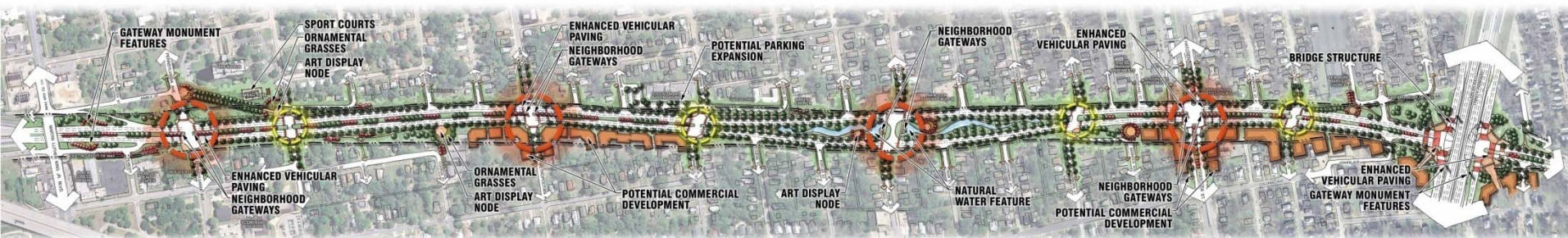
Proposed
Trinity Parkway



Trinity Parkway & S.M. Wright

S.M. Wright Parkway

- Trinity Parkway connection to IH-45 eliminates need for “Dead Man’s Curve” at US 175 and S.M. Wright
- Provides opportunity to make S.M. Wright a low-speed road
- Pedestrian crossings, sidewalks, landscaping
- Trinity Parkway southern terminus scheduled for construction 2012-2015; SM Wright downgrade will begin construction after this segment of Parkway is complete



Transportation: Sylvan Ave. Bridge



Sylvan Ave. Bridge



- TxDOT/City of Dallas project
- Estimated cost \$40 million
- Estimated construction start Summer 2011

Transportation: Signature Bridges



Transportation: Margaret Hunt Hill Bridge

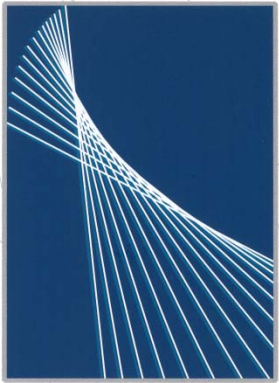


Visit the webcam at
www.trinityrivercorridor.org
to view construction progress



Photo by David Mimlitch, taken with
a remote controlled airplane





THE
WOODALL RODGERS
EXTENSION

Singleton Blvd.

Continental Ave.

Riverfront Boulevard

Spur 366 (Woodall Rodgers)

IH 35E

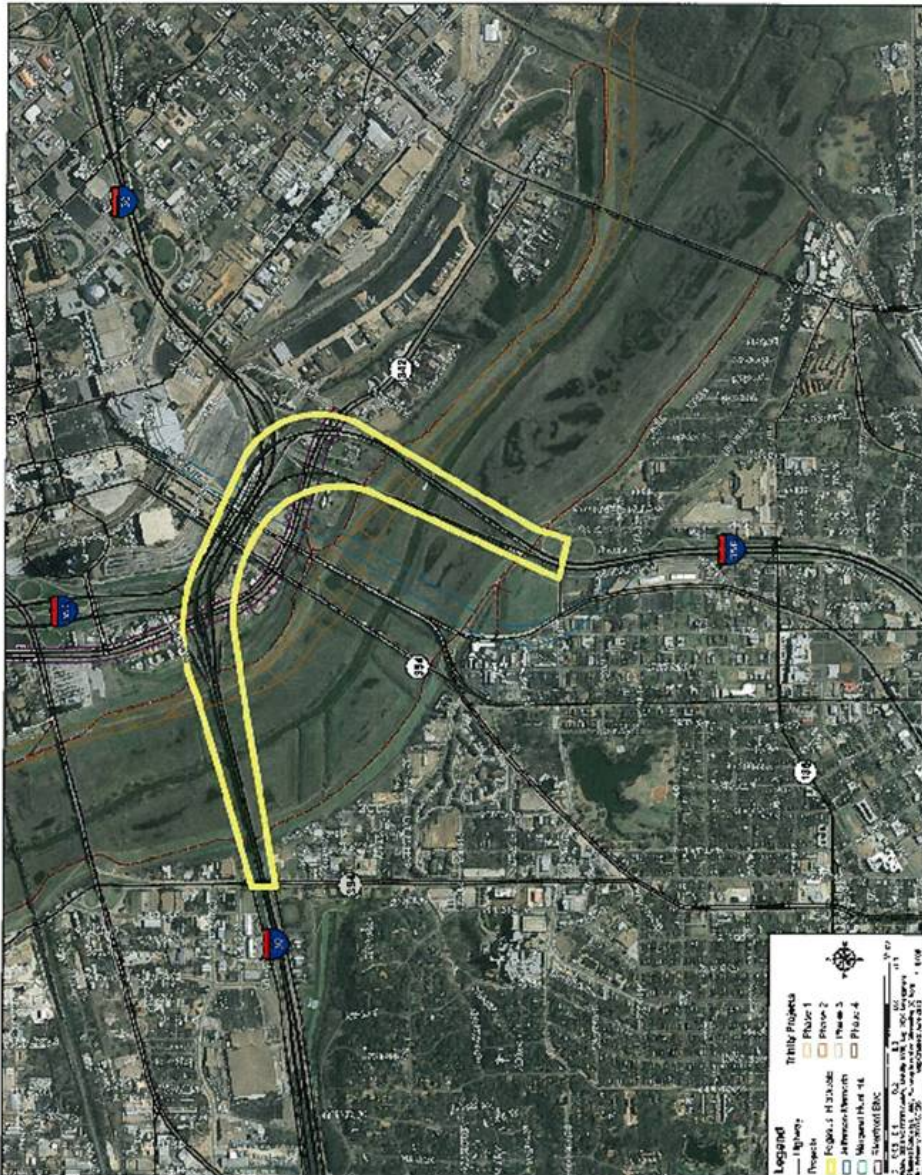




Continental Ave. Pedestrian/Bicycle Bridge



Transportation: Margaret McDermott Bridge



- Replaces IH-30 Bridge
- Center arch 250 ft. tall
- 11 main lanes
- TxDOT construction scheduled for 2012



Summary of Accomplishments

- Six projects already completed (Loop 12 Boat Launch, Sylvan Ave. Boat Launch, Trinity River Audubon Center, 8 miles of soft surface trails, Texas Buckeye Trail ADA-accessible segment, Lower Chain of Wetlands)
- Six projects under construction (MHH Bridge, Dallas Wave, Santa Fe Trestle Trail, Rochester Gateway Park Improvements, Pavaho Pump Station and Trinity Trail Phases 1 & 2)
- Ten projects expected to be awarded for construction within one year (Elm Fork Athletic Complex, Moore Gateway Park, IH-20 Gateway Park, Sylvan Ave. Bridge, Loop 12 Gateway Park, West Dallas Gateway Park, Baker Pump Station, Upper Chain of Wetlands, Continental Ave. Pedestrian Bridge, 100 year levee fixes)
- Six projects under design to begin construction 2012-2015 (Margaret McDermott Bridge, Lamar Levee, Trinity Lakes, Trinity Trails Phase 3, Trinity Parkway, Dallas Floodway Levees)
- Three projects expected to be under design in early 2011 (Joppa Gateway Park, Cedar Crest Gateway & Texas Horse Park)





Upcoming Events

- Inauguration of the Dallas Trinity Paddling Trail - May 10th, 10:30 a.m., Trammell Crow Park
 - Part of Texas Parks & Wildlife Texas Paddling Trails Program
 - One of 26 paddling trails in Texas
 - 10 miles, from Sylvan Ave. to Loop 12
- Trinity River Wind Festival - May 14th, 12 noon – 6 p.m., Trammell Crow Park
 - Show kites and hot air balloons
 - Bird Shows
 - Vendors
 - Wind Symphony Concert



Upcoming Events

- April/May 2011 – Trinity Bird Count
 - Seasonal bird count for the Trinity River Corridor
 - Learn about the program at www.trinitybirdcount.com
 - Additional counts will be held for Summer, Fall and Winter
 - Sponsored by the Trinity Commons and the Trinity River Audubon Center





Trinity River Project Office

(214) 671-9500

www.trinityrivercorridor.org



THE TRINITY
DALLAS

