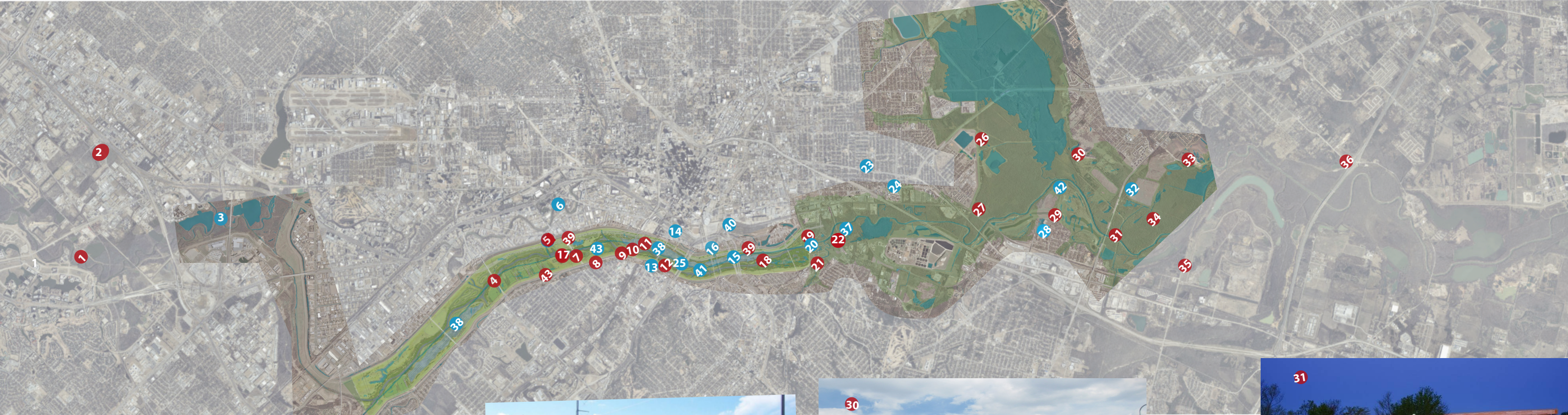
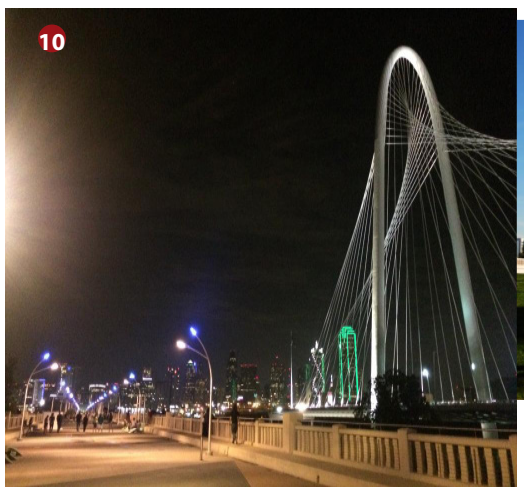


## COMPLETED/SUBSTANTIALLY COMPLETE

1. California Crossing
2. MoneyGram Complex
4. Hampton Bridge
5. Baker Pump Station
6. Trinity Strand Trail Ph1
7. Sylvan Bridge
8. Pavaho Pump Station
9. West Dallas Gateway
10. Continental Bridge
11. Margaret Hunt Hill Bridge
12. Trinity Overlook
17. Sylvan Boat Launch
18. Trinity Skyline Trail Ph I
19. Santa Fe Trestle Trail
21. Moore Park Gateway
22. Cedar Crest Bridge & Gateway
25. 10K Levee-Top Trail
26. William Blair Jr. Park Trails
27. Buckeye Trail
29. Lower Chain of Wetlands
30. Texas Horse Park
31. Loop 12 Boat Launch
33. Trinity River Audubon Center
34. AT&T Trail
35. Trinity Forest Trails Phase I & II
36. Great Trinity Forest Gateway & Horse Trails
39. 100-year Levee Fix

## IN - PROGRESS

3. Elm Fork Greenbelt Master Plan [2015]
13. Beckley/Commerce [2016]
14. Riverfront Blvd [2016]
15. Horseshoe/McDermott Bridge [2017]
16. Able Pump Station [2017]
20. Standing Wave [2012]
23. SM Wright [2019]
24. South Lamar [2016]
28. Joppa Gateway [2015]
32. Trinity Forest Golf Course [2016]
37. Upper Chain Wetlands [2016]
38. Trinity Lakes Phase I [2016]
40. Cadiz Street [2015]
41. Trinity Skyline Trail Phase II [2015]
42. Trinity Forest/ Joppa Connector [2015]
43. Pavaho Wetlands [2015]

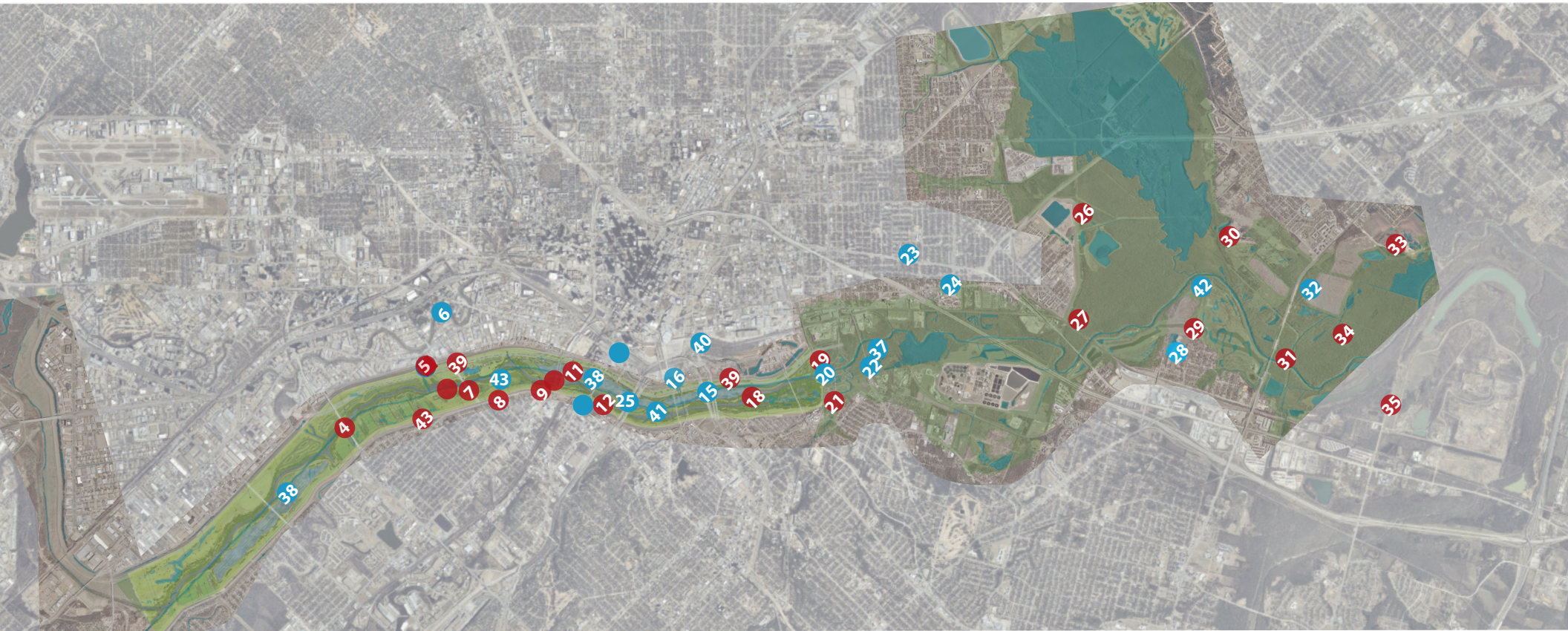


**ALREADY COMPLETE**

- Gateway
- Bridge & Gateway [2015]
- Trail
- Park Trails
- Wetlands
- Park
- Launch
- Dubon Center
- Trails Phase I & II
- Forest Gateway & Horse Trails
- Fix

**IN - PROGRESS**

- 3. Elm Fork Greenbelt Master Plan [2015]
- 13. Beckley/Commerce [2016]
- 14. Riverfront Blvd [2016]
- 15. Horseshoe/McDermott Bridge [2017]
- 16. Able Pump Station [2017]
- 20. Standing Wave [2012]
- 22. Cedar Crest Bridge & Gateway [2015]
- 23. SM Wright [2019]
- 24. South Lamar [2016]
- 28. Joppa Gateway [2015]
- 32. Trinity Forest Golf Course [2016]
- 37. Upper Chain Wetlands [2016]
- 38. Trinity Lakes Phase I [2016]
- 40. Cadiz Street [2015]
- 41. Trinity Skyline Trail Phase II [2015]
- 42. Trinity Forest/ Joppa Connector [2015]
- 43. Pavaho Wetlands [2015]



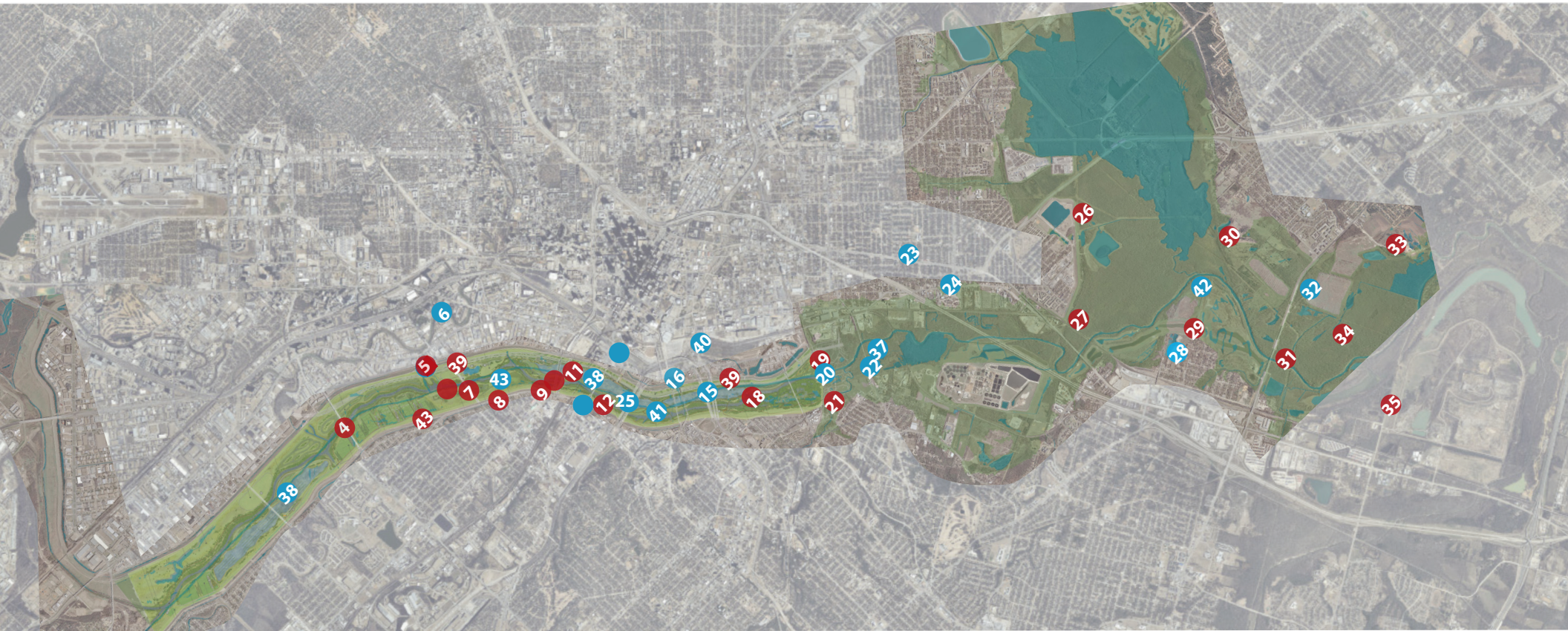
**CORRIDOR PROJECT [AS OF FEBRUARY 2015]**

**ALREADY COMPLETE**

- Gateway
- Bridge & Gateway [2015]
- Trail
- Park Trails
- Wetlands
- Park
- Launch
- Dubon Center
- Trails Phase I & II
- Forest Gateway & Horse Trails
- Fix

**IN - PROGRESS**

- 3. Elm Fork Greenbelt Master Plan [2015]
- 13. Beckley/Commerce [2016]
- 14. Riverfront Blvd [2016]
- 15. Horseshoe/McDermott Bridge [2017]
- 16. Able Pump Station [2017]
- 20. Standing Wave [2012]
- 22. Cedar Crest Bridge & Gateway [2015]
- 23. SM Wright [2019]
- 24. South Lamar [2016]
- 28. Joppa Gateway [2015]
- 32. Trinity Forest Golf Course [2016]
- 37. Upper Chain Wetlands [2016]
- 38. Trinity Lakes Phase I [2016]
- 40. Cadiz Street [2015]
- 41. Trinity Skyline Trail Phase II [2015]
- 42. Trinity Forest/ Joppa Connector [2015]
- 43. Pavaho Wetlands [2015]



**CORRIDOR PROJECT [AS OF FEBRUARY 2015]**